

Portland Community College Newberg Center

Project Overview



The building's south facing roof and natural ventilation stacks organize the building circulation. - Photo Credit: Stephen Miller

Portland Community College (PCC), Oregon's largest institution of higher learning, serves residents in five counties. Its mission is to “advance the region’s long-term vitality by delivering accessible, quality education to support the academic, professional, and personal development of the...communities PCC serve(s)”.

As part of a bond measure to expand classroom space, PCC purchased a 15-acre site in Newberg, a small town in the Willamette Valley, to develop a new educational facility. The 13,500-square-foot PCC Newberg Center is the initial building in the master plan. A required street extension through the site and a future bypass right-of-way led the design team to position parking south of the street, adjacent to the bypass, creating a pedestrian-only campus to the north.

As the first building on the site, creating a welcoming sense of place was critical to the success of the campus. The large, south-facing roof reaches beyond the building’s shell to create a sheltered entry plaza – the front door to the campus. Organized around a central circulation spine, three classrooms and an administrative suite flank the north side. Multi-purpose rooms to the south shift and rotate to create a dynamic central commons for student, teacher, and community interaction.

Location:

135 Werth Blvd.
Newberg Oregon 97132
United States

Project Owner:

Portland Community College

Submitting Architect:

Hennebery Eddy Architects, Inc.

Project Completion Date:

August, 2011

Project Site:

Previously Undeveloped Land

Project Type:

Education – College/University (campus-level)

Project Site Context/Setting:

Rural

Other Building Description:

New

Building or Project Gross Floor Area:

13,500 square feet

BOMA Floor area method used?:

Yes

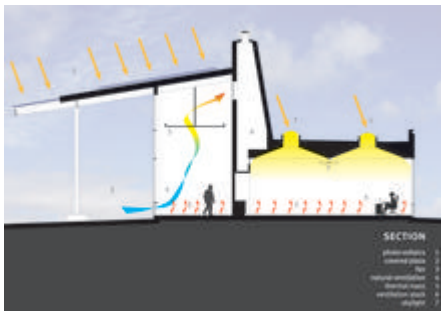
Hours of Operation:

8:30am to 8:30pm M-F, 8:30am to 2pm Saturday

Total project cost at time of completion, land excluded:

\$7,200,000.00

Design & Innovation



The building form is an expression of the Net-Zero Energy strategies. - Photo Credit: Hennebery Eddy Architects

Designed to be the first net-zero-energy higher education building in Oregon (and the second in the United States), the Newberg Center supports PCC's sustainable mission to reduce greenhouse gas emissions 80% by 2050. As the first project of a construction bond, the building serves as a living laboratory for PCC to study energy use and strategies for its reduction. The Center's small footprint allowed PCC to explore new systems on a small scale, allowing facilities personnel to become acquainted with different maintenance requirements before applying them on new buildings across PCC's three campuses and seven centers.

The design focused on four approaches to minimizing energy use to achieve net-zero: creating a highly efficient envelope; maximizing passive strategies; utilizing efficient systems; and engaging the user. The end result is a building form expressive of its passive design strategies – from the curtainwall pattern to the use of the ventilation stacks as an organizing element in the building. But the more important outcome is PCC's engagement in living within the building's energy footprint, educating themselves and students about energy-saving

behavioral changes, such as wearing seasonally appropriate clothing, and the larger issue of environmental stewardship.

Regional/Community Design



In recent years, PCC has seen an upward trend of high school graduates from small communities around Newberg taking courses at PCC's Sylvania Campus. Getting to class required a 40-mile round-trip trek along traffic-congested Highway 99. Located in Newberg, on a site served by major bike routes, the Center meets the community's educational needs while reducing travel-related greenhouse gases and provides higher education for those without access to an automobile.

PCC and the design team coordinated with the City of Newberg to bring multi-modal transportation options to the Center's front door. The required roadway extension was designed to slow traffic with narrow lanes, a turnaround, and planted median strip, to make biking safe to the Center's entry. "Sharrows" painted on the roadway remind drivers they are sharing the road with bicycles. The design team also worked closely with the local bus service, the Newberg Flyer, to extend service to the campus with a stop at the Center's entry plaza.

Nestled in the Willamette Valley, the Center offers views of the nearby hillsides and greenways. The one-story building is mindful of the scale of the surrounding residential neighborhood while providing a community gathering space at the large, sheltered entry plaza.

Metrics

Estimated percent of occupants using public transit, cycling or walking:

3%

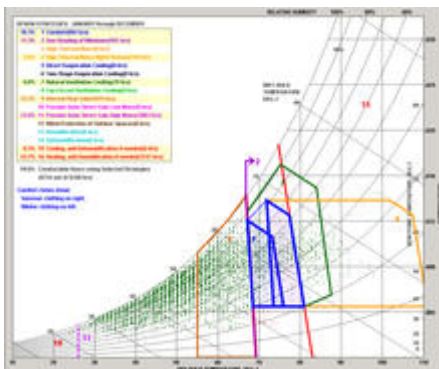
Land Use & Site Ecology

The guiding principles in developing the 15-acre Master Plan included creating a net-zero campus of the caliber expected of a four-year institution. The planning process included analysis of solar access, wind and ground-source-heat potential, and adjacency to bike and pedestrian paths. The Master Plan's open-space framework connects to the surrounding community and leads to a central quad at the heart of the campus.

Informed by detailed analyses of existing soil, the design team went to great lengths to reuse all the native topsoil on site and minimize importing soil amendments. The landscape design responds to existing soil conditions by including a dense and diverse community of native plants in bioswales, providing habitat and improving water quality across the site. Large masses of shrubs and groundcover provide substantial shelter for birds and insects, while large street trees provide convenient perching for local hawk species. A selection of low evergreen shrubs located adjacent to the building's natural ventilation louvers assist with passive cooling.

To mitigate the heat retention associated with roadways and parking lots, a variety of large shade trees, well-adapted to the region and tolerant of non-irrigated soils, flank the new roadway, its continuous median strip, and the parking lot.

Bioclimatic Design



Located roughly 60 miles inland of the Oregon coast, the city of Newberg enjoys the mild weather of the Pacific Northwest, characterized by wet winters and dry, breezy summers.

Achieved on a tight public budget, with a LEED Platinum goal, the Newberg Center showcases cost-effective, bioclimatic green strategies to create a highly sustainable educational facility accessible to the broad socio-economic groups PCC serves. Stretched out along the east-west axis, the design maximizes the north and south building exposures. The majority of classroom and office spaces are located on the north side of the building, allowing spaces to be daylit with diffuse north light. A deep overhang on the south side of the building protects openings from glare while providing outdoor spaces that can be used even during the wet winters.

Taking advantage of the Pacific Northwest's climate, the building incorporates natural ventilation and passive cooling articulated by the ventilation stacks that organize the circulation spine. Spinning ventilation turbines on each stack draw fresh air through louvers along the building's perimeter and release hot air through their tops.

Light & Air



Ventilation stacks with wind-driven ventilation turbines. - Photo Credit: Stephen Miller



The daylighting strategy combines common skylights and acoustical ceiling tiles in a unique sloped ceiling system. - Photo Credit: Stephen Miller



Solid portions of the curtainwall are filled with 6" of spray foam insulation for a 30% window to wall ratio. - Photo Credit: Stephen Miller

The cost-effective daylighting design combines common skylights and acoustical ceiling tiles in a unique sloped ceiling system to wash the classrooms and open offices with even, diffused daylight - eliminating the need for electric lights during the day. Large panes of frosted glass, between the classrooms and the commons, light the classrooms from two sides while minimizing distraction. In the commons, the curtainwall pattern reflects a window-to-wall ratio that balances daylighting with overall building R-value, while north-facing clerestory slot windows evenly light the space.

In addition to natural ventilation, the building's air quality is monitored by CO₂ sensors, and the green housekeeping policy prevents the use of toxic chemicals in or around the building.

While achieving net-zero energy provides the obvious benefits of reduced greenhouse gas

emissions and negligible energy expense, the most important outcome is re-connecting people with their environment. The Center's reliance on passive systems means the character of the light in the building changes throughout the day as the sun makes its path across the sky. As the seasons shift from summer to winter, so will the indoor temperature subtly shift from warmer to cooler, and the introduction of fresh air brings a sense of the outside environment and climate.

Metrics

Daylighting at levels that allow lights to be off during daylight hours:

98%

Views to the Outdoors:

98%

Within 15 feet of an operable window:

70%

Water Cycle

The existing natural topography was largely maintained with plant selections and locations reflecting the site's natural hydrology. Faced with challenging existing clay soils, which are slow draining in the winter and have a low water capacity during the summer months, the design team selected drought-tolerant plants well adapted to these conditions.

Overall water use was reduced by 49.2% through the use of low-flow faucets and toilets. A weather-based irrigation system controller, drip irrigation and high-efficiency spray heads reduced irrigation water use by more than 50%. Additionally, the street median landscaping includes bulbs, shrubs, and trees requiring no long-term irrigation system, and surface water from the entry plaza and parking lot is directed into plant beds and swales to limit irrigation water use.

While the rainwater catchment system was eliminated for budgetary reasons, the project's irrigation lines were laid with purple pipe to provide seamless integration into the City of Newberg's current grey water re-use program (run in purple pipe throughout the city and intended for irrigation-only use) when the system is eventually extended to the Newberg Center site.

Metrics

Percent reduction of regulated potable water:

49%

Is potable water used for irrigation:

Yes

Percent of rainwater from maximum anticipated 24 hour, 2-year storm event that can be managed onsite:

2%

Energy Flows & Energy Future



Aradiant slab and ceiling fans provide the building's heating and cooling. - Photo Credit: Stephen Miller

To drive down the building's peak energy load, passive strategies included maximizing north and south building exposures, deep overhangs, daylight, natural ventilation, concrete floors for thermal mass and a super-insulated envelope using structural insulated panels. Good passive design eliminated all mechanical cooling (excluding the server closet) and nearly all mechanical ductwork.

Supporting these passive strategies, highly efficient, separate systems provide fresh air, heat, cooling, and lighting. When outside temperatures are below 55° F, heat-recovery ventilators provide energy-efficient fresh air. The building's concrete slab heats users directly, not the air around them, by circulating 90° water through the closed-loop radiant system. In addition, ceiling fans provide a 3° drop in ambient temperature through air movement while using a fraction of the energy of air-conditioning units. To provide appropriate lighting while maximizing energy savings, lighting controls dim lights when daylight is sufficient, and vacancy sensors (which turn lights off when a room is empty but do not automatically turn lights on when someone enters) prevent lights being left on in unoccupied rooms.

The remaining energy needs are met through a 109kW roof-top photovoltaic array, including translucent panels covering the outdoor entry plaza.

Metrics

Total pEUI:

29 kBtu/sf/yr

Net pEUI:

0 kBtu/sf/yr

Percent Reduction from National Median EUI for Building Type (predicted):

100%

Lighting Power Density:

0.60 watts/sf

Upload Energy Data Attachment:

 [Newberg Energy Analysis Report.pdf](#)

Materials & Construction

Critical to keeping energy use low was the creation of a tight, highly efficient building envelope. SIPS (structural insulated panels) used for the roofs and walls provide a high R-value and greatly reduce heat loss from thermal bridging and air infiltration. Double-dampers behind the natural ventilation louvers provide a tight seal when closed to prevent drafts. Close attention and coordination with the contractor during construction, including mock-ups and air leakage tests of the louver assembly and installation, provided confirmation of a tight, well-sealed envelope.

The project also focused on minimizing material use, such as using the structural concrete slab and concrete shear walls as final finishes and strategically placing FSC-certified white oak where it would have the greatest impact, at classroom entries and the reception desk.

Overall, the building included 29% local materials, including brick, gypsum board, and gravel used for the roadway extension, and 25% materials with recycled content; and 85% of construction waste was diverted from local landfills.

Long Life, Loose Fit



Sliding glass doors between the commons and the covered entry plaza provide flexibility in the building function. - Photo Credit: Stephen Miller

As the first building on a new campus, the Newberg Center was designed not only to provide classroom spaces and function as the campus front door but also with the understanding that, with the development of future classroom buildings on site, it would one day be transformed into the student union. To provide flexibility for this transition, the design team used a structural steel frame to allow all interior walls to be easily removed or reconfigured. The 30'x30' structural bays, with steel columns in the corners, allow multiple areas to be combined to create larger spaces for uses such as a library or cafeteria.

Design elements provide a flexible-use infrastructure: a wood-clad cable tray, located in the circulation spine and doubling as an entry soffit at classrooms, makes maintenance possible without disrupting classes and allows for easily changing out technology; large sliding glass walls between the multi-purpose room and the commons, and between the commons and the outdoor plaza, allow the building to be opened up to create a dynamic flow of spaces for larger events; and frosted glass partitions throughout the building share light between spaces and function as additional "white board" space for classrooms.

Collective Wisdom & Feedback Loops

Early design direction from PCC included creating a highly sustainable building of the caliber expected of a four-year institution. Bi-weekly meetings with faculty, administrators, and facilities ensured these goals were met and created buy-in from PCC on behavioral and institutional changes necessary to achieve net-zero energy.

The design team helped PCC examine district-wide standards for energy-saving measures. The final design includes a number of firsts for PCC: an exposed concrete slab in classrooms, a computer lab with laptops in lieu of desktops, no air conditioning, a reduction in vending machines, a non-refrigerated water fountain, and an expanded thermal comfort range. The incorporation of energy monitoring devices allows PCC to study the building's energy use and energy reduction strategies. The design team also talked with faculty and staff about their role in meeting PCC's net-zero aspirations. They, in turn, are educating students on the meaning of net-zero, the larger issue of environmental stewardship, and how students can contribute.

Regular meetings with community neighbors, local city officials, and future students built support within the community and allowed the design team to respond to community input, such as incorporating a large commons to fulfill a need for a neighborhood gathering space.

Other Information

Cost and Payback Analysis:

The Newberg Center was funded as part of a \$374 million bond measure. As a public institution with a deep environmental commitment, PCC wanted to show that sustainability is not only for private, big-budget institutions – that it can, and should, be done on a public budget to create sustainable spaces accessible to all socio-economic groups. The Newberg Center was seen as a pilot project for PCC to understand sustainable building strategies not previously used on their campuses and to have a tangible project that moves them towards creating a net-zero campus. As such, the net-zero aspects were a mission-based rather than economics-based decision. The simple payback for the proposed facility, with all net-zero aspects combined, is 20.2 years (incentives not included).

The total project cost (land excluded) was \$7.2 million, with a building construction cost of \$4.7 million. Additional funding for 75kW of the solar array came from the State of Oregon's 1.5% for solar requirement placed on the bond funding. To offset some of the energy-efficiency cost measures, the Newberg Center was also enrolled in the Energy Trust of Oregon's Path to Net Zero pilot program and received approximately \$88,000 in incentives.

Process and Results:

Design

This fast-paced project went from Master Plan through Bid Documents in seven months. From the beginning of the project, community input was a critical part of the design process. In

order to develop a new Center consistent with the surrounding communities' vision, the PCC Newberg Advisory Committee, consisting of community leaders representing local city governments, high school students, and other organizations, was formed and met with regularly to provide valuable input to PCC and the design team.

Another critical part was the inclusion of a member of the Facilities Department (FMS) on the Building Committee. This member brought a crucial vantage point to the discussion of green building strategies to help make the design more maintenance-friendly. He also became an advocate for the design within FMS. Additionally, at each project milestone, the design team held a roundtable with FMS staff to review the design and gather their feedback.

An all-day net-zero design charrette with the architects, engineers, and PCC Building Committee provided an opportunity to explore, as a team, solutions for getting to net zero. During this charrette, many of the concepts for the passive design strategies were developed. Equally important in creating buy-in from the owner was a tour of multiple buildings in Oregon with sustainable design strategies similar to those being considered for the Newberg Center.

Construction

Due to PCC constraints, the project was delivered as a traditional Design-Bid-Build project. While not ideal, the selected contractor came up to speed quickly and became a valuable, collaborative partner for the team. With construction starting in October and running through one of the wettest winters in recent memory, the SIPs panels proved challenging to work with.

Operations and Maintenance

Extensive training occurred for all FMS staff, including an overview meeting with the design team to discuss the building and answer questions regarding the building systems with which the group was unfamiliar. The design team also met with faculty and staff of the facility to discuss the operation of the building and how they could contribute to a lower energy footprint. A comprehensive Users' Guide was developed to help the faculty, staff, and students understand and operate the building and to encourage ownership.

Post-Occupancy

The building is currently in an 18-month process of measurement and verification with the Energy Trust of Oregon, who will help the College and design team fine-tune the building as necessary to achieve all of the predicted energy savings. The building is sub-metered to collect energy use data on HVAC, lighting, and plug loads. The design team will review this energy data annually to inform future designs.

Rating System(s) Results:

Rating System:

Tracking LEED Platinum, not yet achieved.

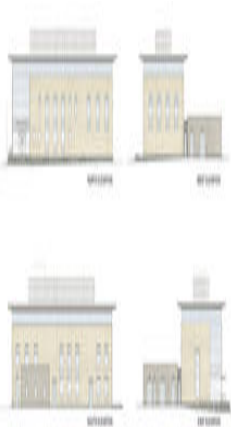
Additional Images



Site Plan - Photo Credit:
Hennebery Eddy Architects



Floor Plan - Photo Credit:
Hennebery Eddy Architects



Elevations - Photo Credit:
Hennebery Eddy Architects



Covered Entry Plaza - Photo
Credit: Stephen Miller



FSC certified white oak was strategically placed where it would have the greatest impact. - Photo Credit: Stephen Miller

Project Team and Contact Information

Primary Submission Contact:

Erica Dunn

edunn@henneberyeddy.com

Hennebery Eddy Architects

921 SW Washington St., Suite 250

Portland Oregon 97205

United States

Project Architect (if different from submission contact):

Erica Dunn

edunn@henneberyeddy.com

Hennebery Eddy Architects

921 SW Washington St., Suite 250

Portland Oregon 97205

United States

Project Team:

Role on Team	First Name	Last Name	Company	Location
Principal In Charge	Timothy	Eddy	Hennebery Eddy Architects	Portland, OR
Project Manager	Doug	Reimer	Hennebery Eddy Architects	Portland, OR
Architecture Team Member	James	Gantz	Hennebery Eddy Architects	Portland, OR
Architecture Team Member	Katalin	Czege	Hennebery Eddy Architects	Portland, OR
Civil Engineer	Mark	Reuland	KPFF Consulting Engineers	Portland, OR
Landscape Architect	Teresa	Chenney	Mayer Reed	Portland, OR
Landscape Architecture Team Member	Ryan	Carlson	Mayer Reed	Portland, OR

Structural Engineer	Shirley	Chalupa	DCI Engineers	Portland, OR
Structural Team Member	Rollston	Frangopoulos	DCI Engineers	Portland, OR
Mechanical Engineer	John	McMichael	Interface Engineering	Portland, OR
Electrical Engineer	Richard	Benney	Interface Engineering	Portland, OR
Electrical Team Member	Matthew	Jones	Interface Engineering	Portland, OR
Lighting Designer	Mark	Godfrey	Interface Engineering	Portland, OR
Envrionmental Design Consultant	Katrina	Shum Miller	Green Building Services	Portland, OR
Environmental Design Consultant	Amanda	Ryan	Green Building Services	Portland, OR
Planning	Catherine	Corliss	Angelo Planning Group	Portland, OR
Senior Project Manager	Joe	Weihmann	R&H/Colas Construction	Portland, OR
Superintendent	Mike	Fessler	R&H/Colas Construction	Portland, OR
Project Manager	Mark	Simpson	R&H/Colas Construction	Portland, OR
Project Engineer	Adam	Petersen	R&H/Colas Construction	Portland, OR
Foreman	Sam	Scott	R&H/Colas Construction	Portland, OR

Source URL: <https://www.aiatopten.org/node/75>